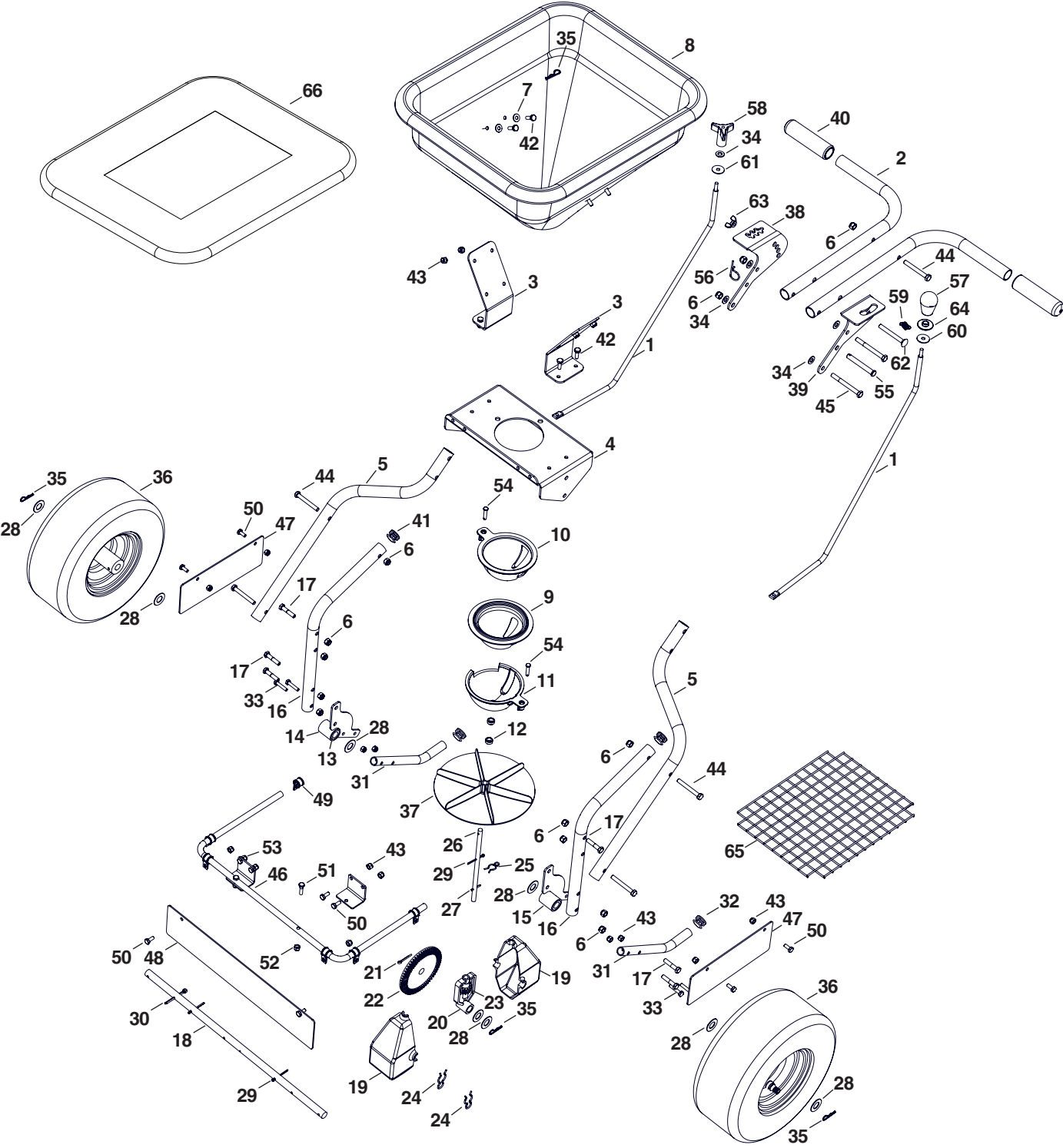


45-0563



45-0563

REF	QTY	PART NO	DESCRIPTION	REF	QTY	PART NO	DESCRIPTION
1	2	28793	ROD, FLOW CONTROL	36	2	49907	WHEEL, POLY 5/8"ID 13/5.0-6
2	2	28791-001	TUBE, HANDLE	37	1	28794	SPREADER IMPELLER
3	2	2-20	BRACE, HOPPER	38	1	28790	BRACKET, PIVOT
4	1	28814	SUPPORT, HOPPER	39	1	2-226	BRACKET, PIVOT (OPEN/ CLOSE)
5	2	28788-001	TUBE, HANDLE EXTENSION	40	2	46446	GRIP, HANDLE 1"
6	13	47810	NUT, HEX .312-18 NYLOC	41	2	49449	PLUG, 1"OD TUBE
7	4	736-0142	WASHER, .281 X .625 X .065	42	8	43012	BOLT, HEX 1/4-20 X 3/4 GR5
8	1	28807	HOPPER, SMALL	43	12	47189	NUT, HEX 1/4-20 NYLOC
9	1	2-112	GATE TRANSITION	44	5	44292	BOLT, HEX 5/16-18 X 2-1/2 GR5
10	1	28808	DISPENSER GATE	45	2	46782	BOLT, HEX 5/16-18 X 3 GR5
11	1	2-102	OUTER GATE	KIT	1	6-204	KIT, SPREADER DEFLECTOR (kit includes items 46 through 53)
12	2	23625	SPACER, .380ID X .620OD X .27	46	1	2-228	TUBE, DEFLECTOR FRAME
13	2	28785	BEARING	47	2	2-229	DEFLECTOR, SIDE
14	1	69887	SLEEVE WELDMENT (RH)	48	1	2-230	DEFLECTOR, FRONT
15	1	69890	SLEEVE WELDMENT (LH)	49	6	4-11	CLAMP, RUBBER SLEEVE
16	2	28801-001	TUBE, LOWER	50	10	43866	BOLT, HEX 1/4-20 X 5/8 GR5
17	6	43085	BOLT, HEX 5/16-18 X 1-1/2 G5	51	2	43661	BOLT, HEX .25-20 X 1 GR5
18	1	2-263	SHAFT, AXLE SPREADER	52	12	47189	NUT, HEX 1/4-20 NYLOC
19	2	47212	HOUSING, LARGE GEAR	53	2	2-221	BRACKET, SS DEFLECTOR MOUNT
20	1	47204	YOKE, LARGE	54	2	48365	PIN, CLEVIS 1/4 X 1.11
21	1	43010	PIN, COTTER 1/8 X 1-1/4	55	1	43037	PIN, CLEVIS 3/8 X 2-3/4
22	1	47209	GEAR, LARGE	56	1	43055	PIN, HAIR 3/32 X 1.8
23	1	47205	GEAR, SMALL	57	1	42651	KNOB, 1/4-20
24	2	49897	CLIP, HAIRPIN 7/8	58	1	43849	KNOB, PLASTIC 1/4"-20
25	1	49898	CLIP, HAIRPIN 5/8	59	1	40526	SPRING, SS EXTENSION
26	1	2-264	SHAFT, SPREADER	60	1	45346	WASHER, NYLON .28 X 1.0 X .06
27	1	46055	PIN, SPRING 1/8 X 1	61	1	42977	WASHER, .28 X 1.0 X .06
28	8	R19212016	WASHER, .656 X 1.25 X .059	62	1	46594	BOLT, CARR 5/16-18 X 2-3/4
29	3	43093	PIN, COTTER 1/8 X 1-1/2	63	1	4-18	WINGNUT, 5/16 - 18
30	1	46855	PIN, COTTER 3/16 X 2	64	1	44685	SPACER, SHOULDER
31	2	28789	TUBE, KICKSTAND	65	1	28812	GRATE
32	2	2-381	PLUG	66	1	2-1	HOPPER COVER
33	4	1509-90	BOLT, HEX 1/4-20 X 1-1/4 GR5				
34	5	48015	WASHER, NYLON				
35	4	47134	PIN, HAIR COTTER .08 X 1.58				